

Granite Counter Top

INSTALLATION INSTRUCTIONS:

Do **NOT** remove strapping and wood blocks before reading these important instructions. Failure to do so may result in damage.



1. *Remove from box straight up and carefully lay top flat on cabinets*



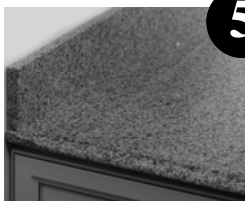
2. *Leave a small space between countertop and the back wall*



3. *Cut bands and remove blocks*



4. *Slide bands out from the **BACK** of the countertop to ensure you don't damage cabinet face frame*



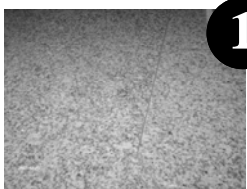
5. *Push top against wall*

See Counter Top joining instructions on reverse side.

Granite Counter Top

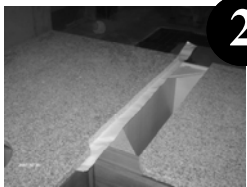
JOINING INSTRUCTIONS:

Once you have completed the steps on the reverse side, please proceed as follows:



1.

Dry fit tops on cabinets to ensure tops are level in height and fit securely



2.

Run aluminum tape (provided) on the underside of the top across the seam to catch any runoff



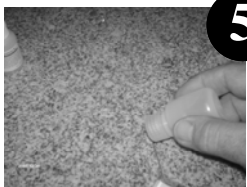
3.

Slide the two sections apart approximately 1/16" at the seam



4.

Using safety gloves to mix epoxy, combine entire bottle of part A into entire bottle of part B and shake thoroughly for at least 30 seconds. NOTE: Epoxy can get hot when mixed and is very adhesive, use caution.



5.

Apply entire bottle of epoxy mixture evenly into entire seam and slide tops firmly together. Place a heavy object on the end of tops (NOT on the seam) to hold tightly in place. Using a straight-edge across the seam, re-check for level. NOTE: You have received one epoxy kit for each seam in your order.