

# FLEXLINE™

## ADA-COMPLIANT CONVERTIBLE VANITY CABINET



### THE PERFECT COMBINATION

With a Flexline™ vanity combo, you can save time, expense and coordination hassles, while meeting ADA requirements.

### EASILY CONVERTED

When a new resident requires an ADA-compliant vanity, or a current occupant's needs change, the Flexline can be easily converted in minutes using just a screwdriver. If wheelchair access is no longer needed, the Flexline can be changed back just as easily.

### PERFECT FOR

- Retirement Communities
- Public Housing
- Residential Developments
- Any Facilities Serving Those with Physical Limitations

### QUICK DELIVERY

You don't have to wait when you order Flexline by Rynone. Whether you order one or 100, your Flexline vanity cabinets and tops will arrive within three weeks. Expedited delivery can occur with special arrangements.

Shown on this page: Formica 9240-58 Cherry Heartwood Laminate Vanity Cabinet, Wheat Granite Top with Bisque Porcelain Bowl.

Faucet and hardware not included.



# FLEXLINE™

## ADA-COMPLIANT CONVERTIBLE VANITY CABINET



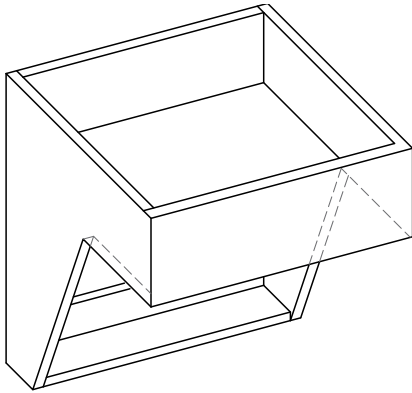
Shown above: Natural Birch Wood Veneer Vanity Cabinet, Solid White Cultured Marble Top with Integral Bowl. Faucet and hardware not included.

### EIGHT REASONS TO CHOOSE FLEXLINE CONVERTIBLE VANITY CABINETS

- 1 | **Convenient Versatility** / One vanity offers ADA compliance and stylish functionality for everyone.
- 2 | **Budget-Friendly** / Affordably priced, lowest long-term investment.
- 3 | **Simple Setup** / Installation and conversion can be done by anyone.
- 4 | **Beautiful Selection** / Design options for any décor from basic to luxurious.
- 5 | **Fast Delivery** / In three weeks or less.
- 6 | **Single Source** / One expert source for vanity cabinet and top.
- 7 | **Order Flexibility** / Large and small orders welcome.
- 8 | **Full Compliance** / Meets all ADA and Fair Housing Accessibility Guidelines.

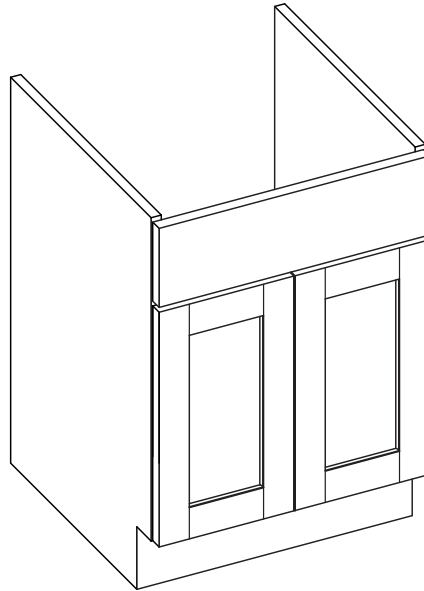
# FLEXLINE™

## HOW IT WORKS



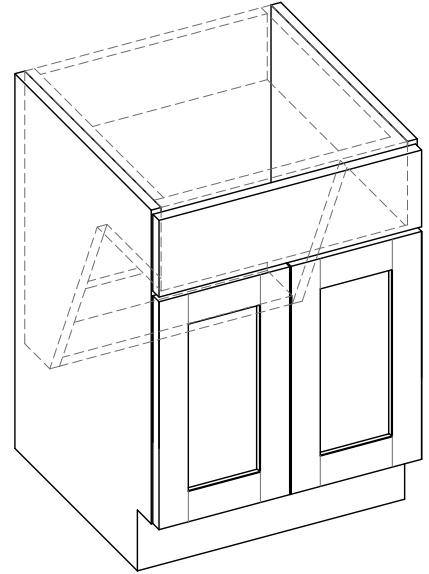
### ADA VANITY

ADA vanity is available by itself without the removable base cabinet.



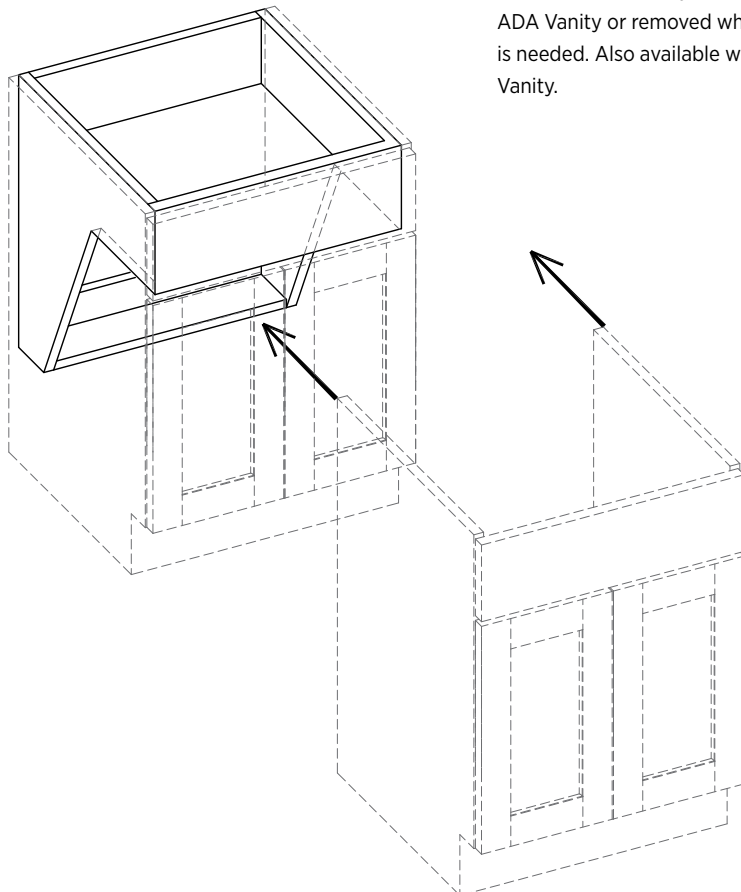
### BASE CABINET

Base cabinet is easily installed over the ADA Vanity or removed when accessibility is needed. Also available without the ADA Vanity.



### VANITY CABINET ASSEMBLED

Two smart vanity options in one clever, compact design.



### VERSATILE DESIGN OPTIONS

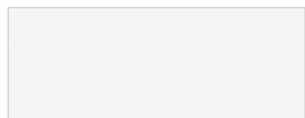
Flexline convertible vanity cabinets come in an attractive range of complementary design options. Choose from several sizes, materials, finishes, and drawer and door styles.

### CUSTOM OPTIONS

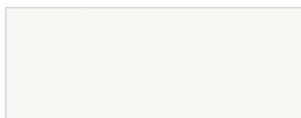
Other custom options are also available by contacting a Rynone customer care specialist at (570) 888-5272 or [CustomerService@FlexlineVanityCabinet.com](mailto:CustomerService@FlexlineVanityCabinet.com).



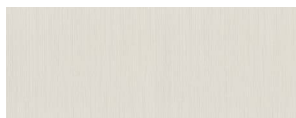
AVAILABLE IN HUNDREDS OF LAMINATE CHOICES, INCLUDING THESE POPULAR COLORS



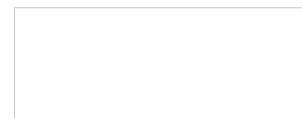
**FORMICA® 949-58** White



**FORMICA® 7197-58** Dover White



**FORMICA® 9285-58** White Twill



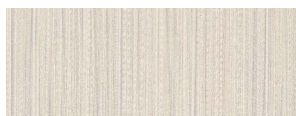
**Cultured Marble / Solid White**



**FORMICA® 927-58** Folkstone



**FORMICA® 961-58** Fog



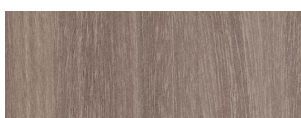
**FORMICA® 8826-58** Neutral Twill



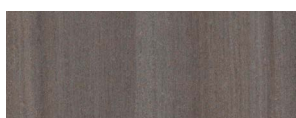
**Cultured Marble / White-on-White**



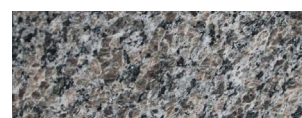
**FORMICA® 5883-58** Pecan Woodline



**FORMICA® 8845-58** Bleached Legno



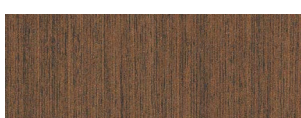
**FORMICA® 5488-26** Smoky Brown Pear



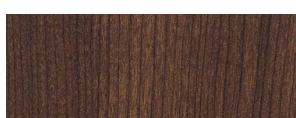
**Granite / New Caledonia**



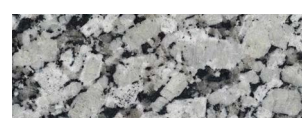
**FORMICA® 7012-58** Amber Maple



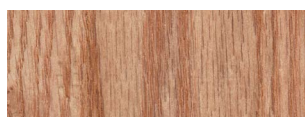
**FORMICA® 5884-58** Chestnut Woodline



**FORMICA® 5886-43** Sorrel Cherry



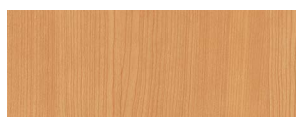
**Granite / Iberian White**



**Real Wood Veneer / Oak**



**Real Wood Veneer / Maple**



**Real Wood Veneer / Cherry**



**Granite / Santa Cecilia Lt**

DOOR AND DRAWER FRONT STYLES



Melamine, Laminate, or Real Wood Veneer Slab Door



Real Wood Shaker Flat Panel



Real Wood Raised Panel



**Quartz / Carrara Verta**



**Quartz / Ocean Gray**



**Quartz / Iceberg**

**Cultured Marble Tops** come with integral bowls the same color as the top. Other color options are available.

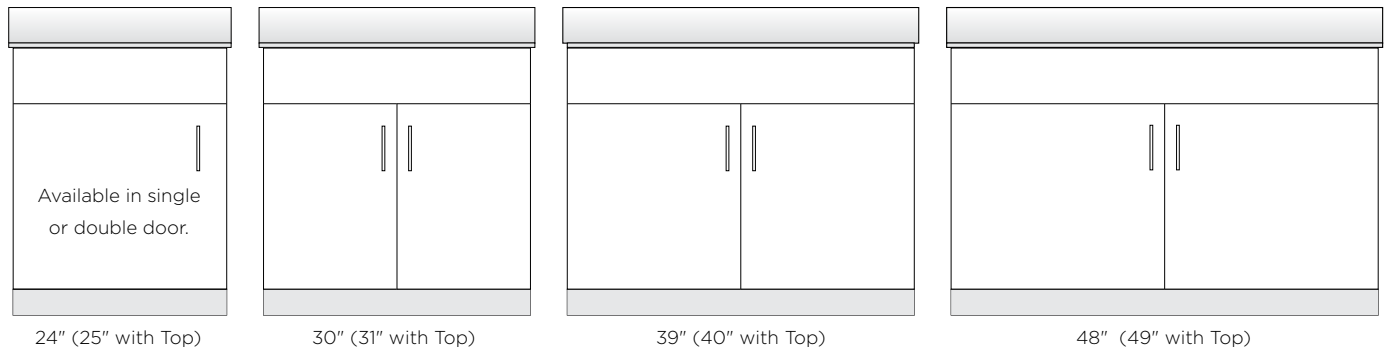
Wood and granite are products of nature; variations in grain, pattern and color are inevitable. Cultured marble is a man-made product that will vary in pattern.

## SPECIFICATIONS

Flexline Convertible Vanity Cabinets come in eight standard widths: 24", 27", 30", 33", 36", 39", 42" and 48" (Four sizes are illustrated below.)

Vanity Cabinet height – 32½" (without top)

Vanity Cabinet depth – 21" (without top)



## COMBINATIONS

Rynone Flexline Vanity Cabinets can be ordered as a combination or as individual components:

- Base Cabinet + ADA Vanity + Vanity Top
- Base Cabinet + Vanity Top
- ADA Vanity + Vanity Top
- ADA Vanity Only
- Base Cabinet Only
- Vanity Top Only

## VALUE OPTIONS

Flexline offers Vanity Cabinet and Top options for every budget and design preference.

**Beautiful Economy** – Laminate Cabinet/Doors + Cultured Marble Top provide beautiful economy

**Mix and Match** – Laminate Cabinet/Doors + Granite Vanity Top, or Wood Veneer Cabinet + Solid Wood Doors + Cultured Marble Top

**For a Luxury Look** – Wood Veneer Cabinet + Solid Wood Doors + Granite Top

## PLYWOOD OR PARTICLE BOARD CONSTRUCTION

### STOCK ITEMS (LAMINATE)

- All ¾" components
- Concealed hinges
- Includes 96mm Satin Chrome Wire Pull

### NON-STOCK ITEMS (WOOD VENEER)

- All ¾" plywood construction
- Concealed hinges
- Door/drawer front style
- Includes 96mm Satin Chrome Wire Pull

## VANITY TOP SPECS

- Cultured Marble Tops come with integrated bowl and 4" backsplash.
- Granite Tops come with standard undermount porcelain bowl and 4" loose backsplash.
- Depth – 22½"
- Thickness – ¾"

## INSTALLATION

- Locate 2 wall studs to attach cabinet.
- Set cabinet to ensure it is level.
- Screw cabinet into studs using, at a minimum, 3" screws at upper and lower mounting rail.
- Before installing the vanity top, ensure it fits securely before gluing.
- Glue vanity top to wall-hung unit.
- **Do not glue top to removable base.**

## BOX SIZES AND WEIGHTS (IN LBS.)

Cultured Marble		Granite		Cabinet	
Size	Weight	Size	Weight	Size	Weight
25	34.0	25	59.0	24	68.0
28	36.4	28	66.0	27	70.0
31	40.3	31	73.1	30	71.5
34	44.2	34	80.2	33	73.5
37	48.1	37	87.3	36	75.0
40	52.0	40	94.3	39	76.5
43	55.9	43	101.4	42	78.0
49	63.7	49	115.6	48	81.0

For more information or custom options, please contact us at (570) 888-5272 or [CustomerService@FlexlineVanityCabinet.com](mailto:CustomerService@FlexlineVanityCabinet.com)